

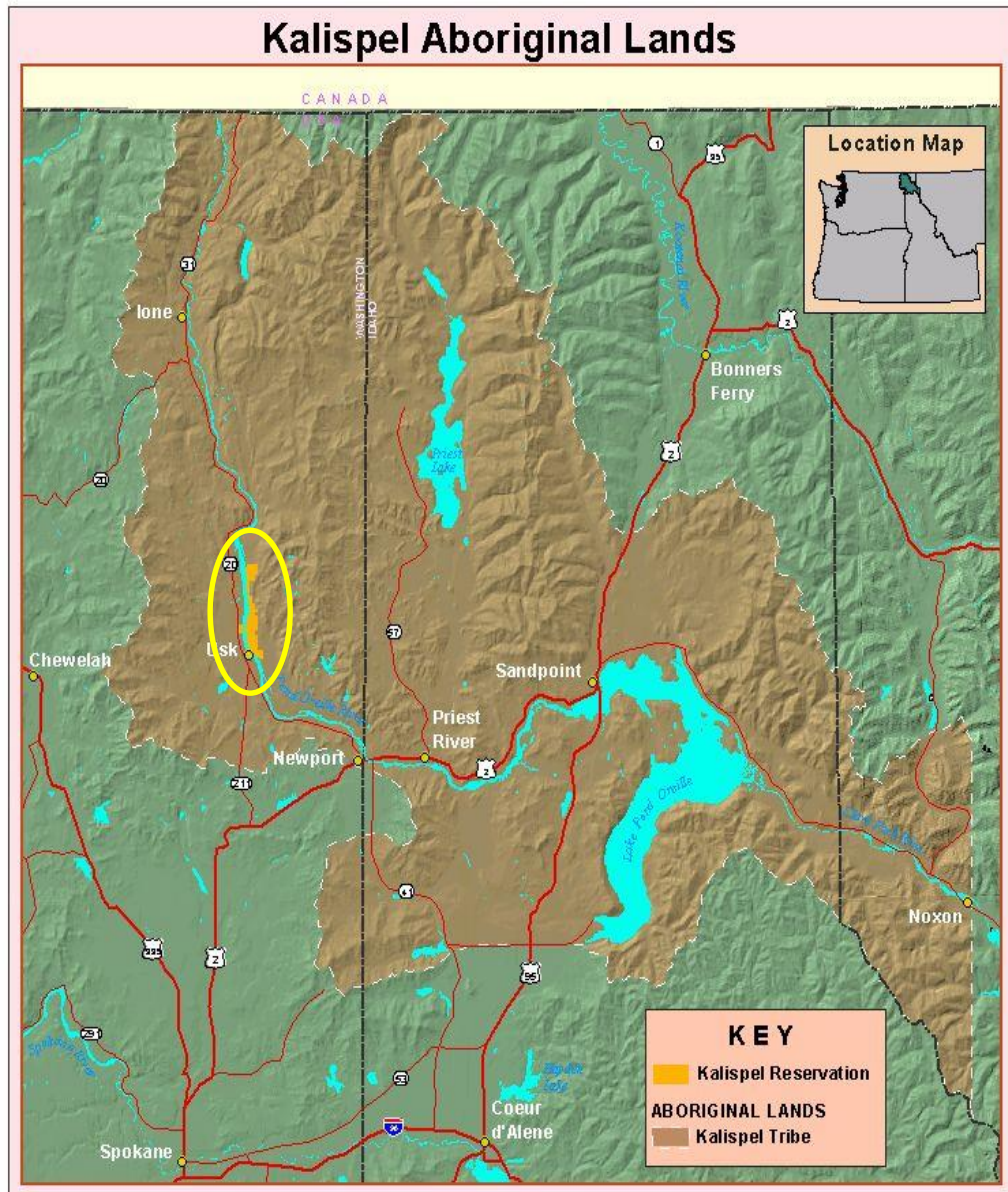
# Tribal Conservation and Natural Resource Management

---

A Kalispel Perspective



# Kalispel Lands

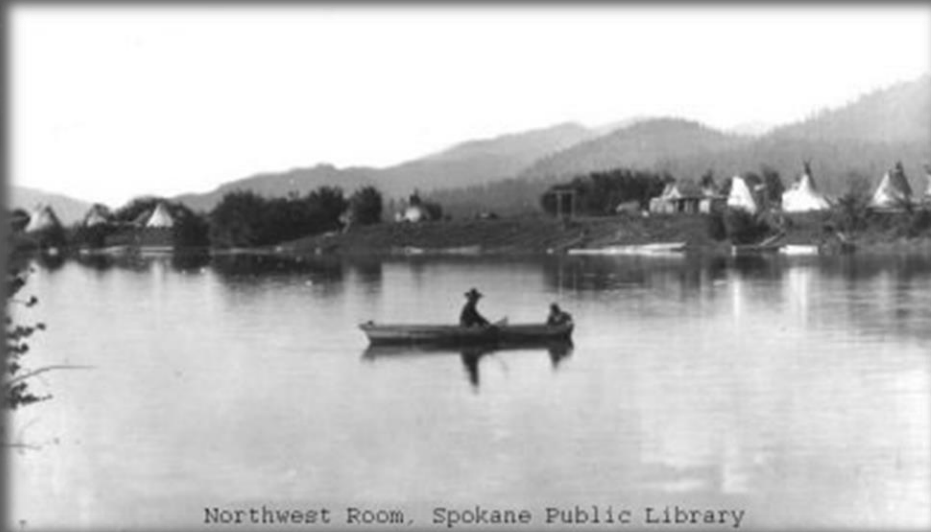


- Kalispel Aboriginal Lands
  - NE Washington, Idaho and Western Montana
  - Over 2.37 million acres
- Reservation
  - NE Washington
  - 4,693 acres
- Other Lands Acquired
  - 2,359 additional acres in Trust status since 1997 (WA only)
  - 4,481 acres in Fee Title status since 1992
    - 1,685 acres in ID (Bonner Co.)
    - 2,796 acres in WA

# Cultural Connections

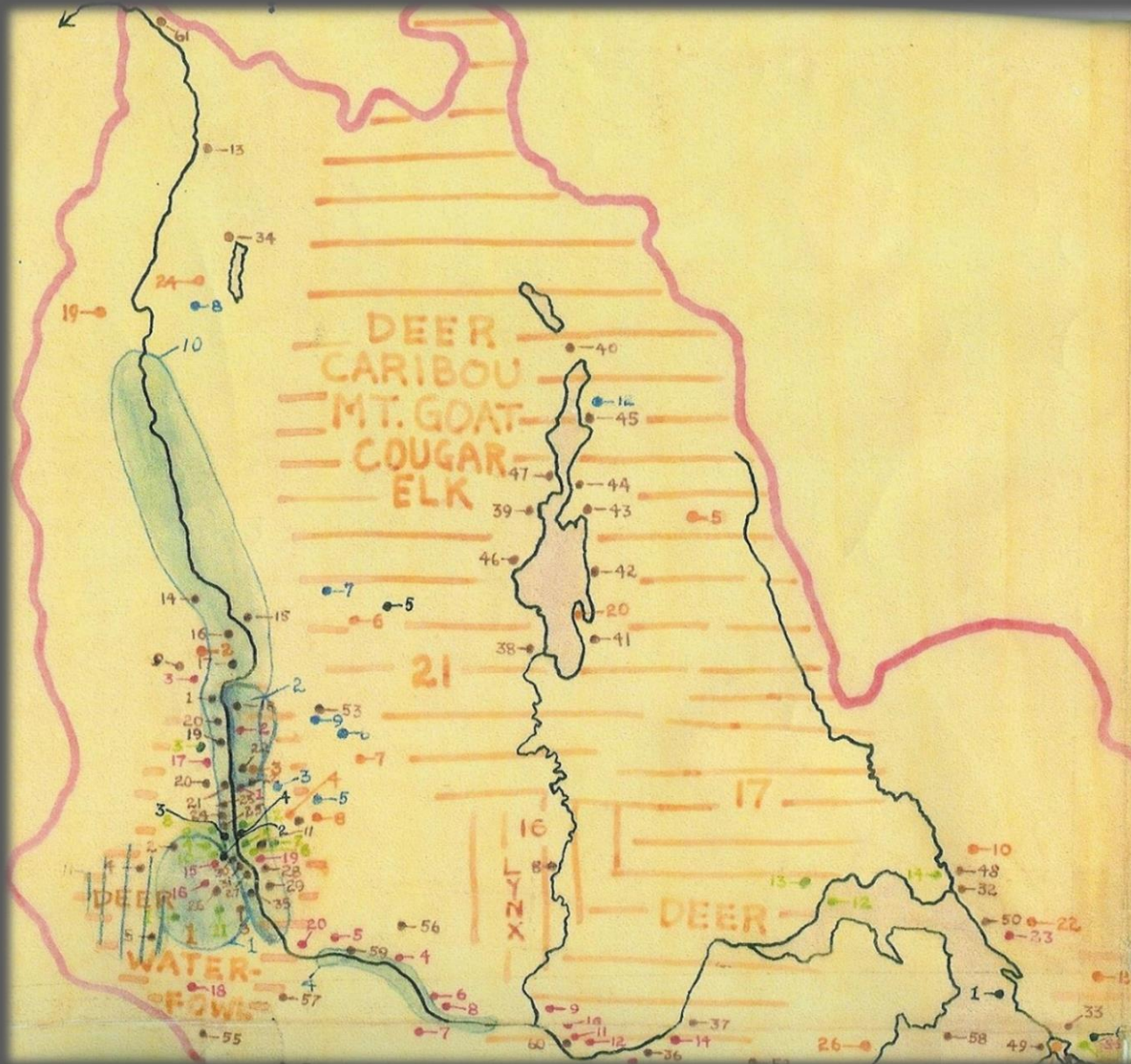


Idaho State Historical Society



Northwest Room, Spokane Public Library

# Tribal Culture and Nature



- Kalispel Tribe organized around specific resource areas
  - Camas
  - Deer & other ungulates
  - Fish
  - Waterfowl
  - Travel corridors

# Past, Present and Future



- The Kalispel have used their heritage and culture combined with modern understanding and technology to form their philosophy for managing and conserving natural resources

# Evolution of the KNRD

- Established in 1992 during strategic planning
  - Initial Staffing – 3 biologists and 1 technician
- Began as a “shotgun approach” for funding based upon “good work”
- Project funding led to Program development
- Completed initial fish and wildlife management plan in 1997
  - Reflected more of a “list” than a plan
  - Revised in 2002 into more of a plan
- Completed a Comprehensive Conservation Plan in 2017
  - Focusing implementation on highest conservation outcomes

# Department Organization

Executive Director  
Deane Osterman

Director of Wildlife & Terrestrial Resources  
Ray Entz

Director of Fisheries & Aquatic Resources  
Joe Maroney

Forestry  
Program  
Shawn Hartzer

Wildlife  
Program  
Bart George

Cultural  
Resources  
Management  
Program  
Kevin Lyons

Water  
Resources,  
Habitat &  
Environmental  
Program  
Eric Berntsen

Fisheries  
Management  
Program  
Jason Connor

Fisheries  
Conservation  
Program  
Jason Olson

# Conservation Planning 2017

## Mission

KNRD safeguards natural and cultural resources for the health and well being of Kalispel people.

# Conservation Planning

## Core Values

- Provide effective conservation leadership throughout the Columbia River Basin
- Maintain and enhance ecosystem services beneficial to Kalispel people
- Provide sustainable harvest opportunities for Kalispel people throughout Kalispel homelands
- Encourage Kalispel people's sustainable use and enjoyment of natural and cultural resources
- Carry out the mission using the best available scientific information and technology

# Conservation Planning

## Operational Targets

- **Engagement** – KNRD strives to create local and regional ownership in conservation issues of importance to the Kalispel Tribe.
- **Ecosystem Resiliency** – KNRD adaptively manages natural resources with priority given to ecosystem services most important to the cultural security of Kalispel people.
- **Sustainable Harvest Opportunities** – KNRD improves opportunities for Kalispel people to harvest healthy natural resources while simultaneously enhancing the ecosystem to produce a sustainable supply of the same.
- **Effective Education & Outreach** – KNRD ensures that Kalispel people are engaged in the Department's mission and informed about their opportunities to use and enjoy natural and cultural resources.

# Partnerships: A Cooperative Approach

- U.S. Fish and Wildlife Service (2 regions)
- Bonneville Power Administration
- Washington Dept of Fish & Wildlife
- IDEQ/WA State Ecology
- U.S. Army Corps of Engineers
- Other Tribes/NGOs
- Seattle City Light
- Avista Utilities
- U.S. Forest Service (2 regions)
- Environmental Protection Agency
- Idaho Dept of Fish & Game
- EWU/WSU/U of I
- Pend Oreille PUD
- Washington State Recreation & Conservation Office
- Bureau of Indian Affairs

# Keys to Our Success

- Foster relationship building at multiple levels
- Rely on “good work” and accurate data
- Focus on mutual and beneficial conservation outcomes
- Build from successes and strengths
- Continue to grow and adapt with knowledge and information

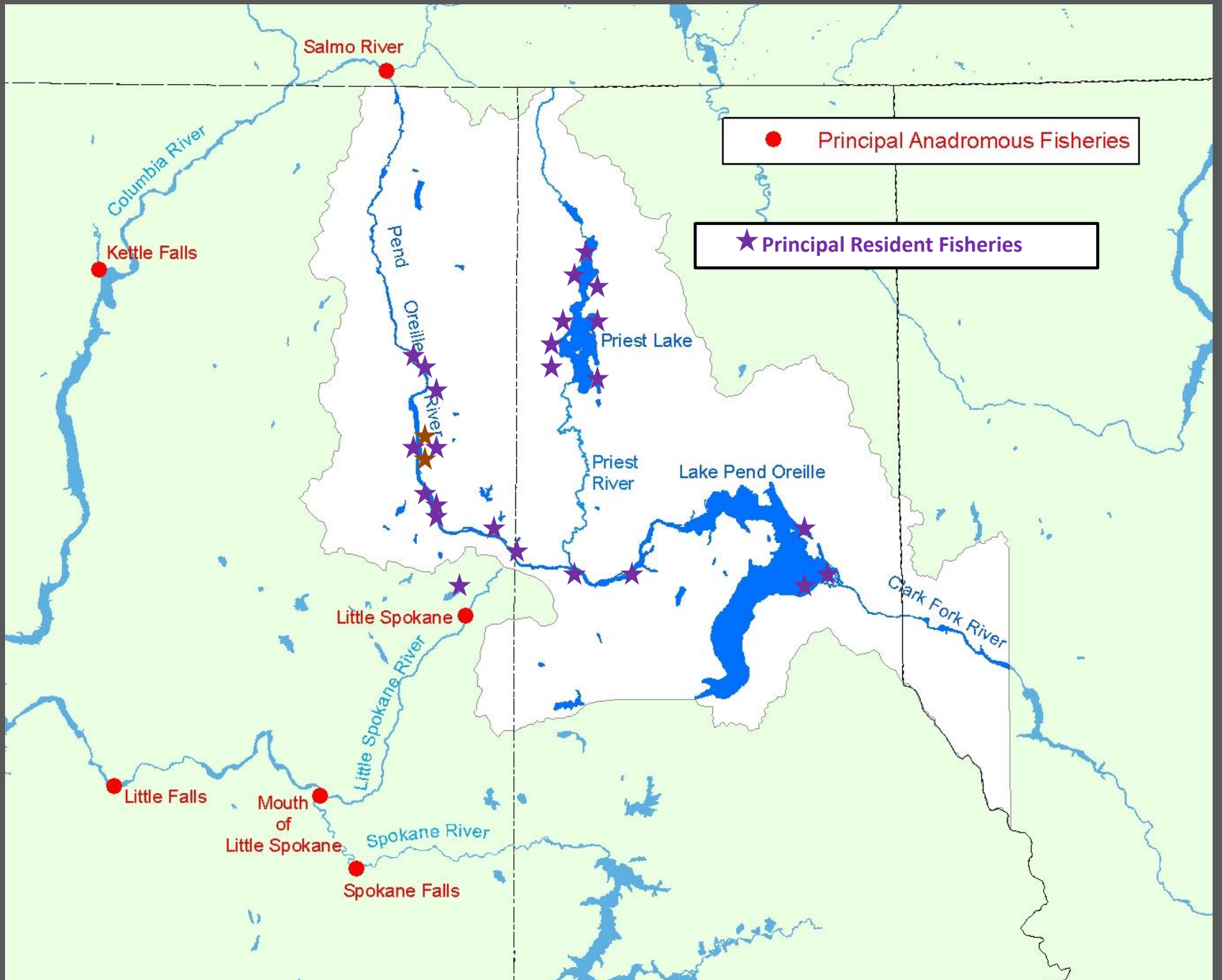
# Fisheries Management

## Salmon



## Resident Fish





# Kalispel Tribal Properties in Idaho





# Fisheries Projects

## Habitat Restoration



## Tributary Fish Passage



## Invasive Species Management



Northern Pike



Brook Trout

# Projects in Idaho

Hughes Aquatic Restoration

Upper Priest Lake, Lake Trout Removal

Bismark Meadows Restoration

Population Dynamics and Evaluation of Management Strategy for Non-native Lake Trout in Priest Lake  
Priest Lake Fisheries Advisory Committee

Goose Creek Channel and Floodplain Restoration

Upper Sand Creek Watershed Recreation Plan

Big Creek Culvert Replacement

Sand Creek Corridor Plan

Pack River Native Salmonid Habitat Plan

Pack River Delta Restoration

Priest River EMAP Habitat Analysis  
Priest River Temperature and Food Quality Study  
Priest River Watershed Group  
Priest River Model, Development, Collaboration and Scenario Report

Evaluation of Fish Assemblages and Piscivore Diets in Developed and Undeveloped Littoral Areas of Lake Pend Oreille

Westslope Cutthroat Trapping, PIT Tagging, and Telemetry in Lower Priest River

Clark Fork Delta Restoration

Bull Trout Biotelemetry Pend Oreille River, Albeni Falls Dam  
Albeni Falls Bull Trout Passage  
Direct Survival/Condition of Subadult and Adult Rainbow Trout Passing Through Albeni Falls Dam (abr)  
Genetic Structure and Population Assignment of Entrained Cutthroat Trout in North Idaho

Avista's Cabinet Gorge Dam FERC License Implementation Management Committee and Water Resource Technical Advisory Committee  
Avista Cabinet Gorge Historic Property Management Plan fo FERC License 2058

# "Pond & Plug" Design - Big Meadows





# Beaver dam analog in Goose Creek

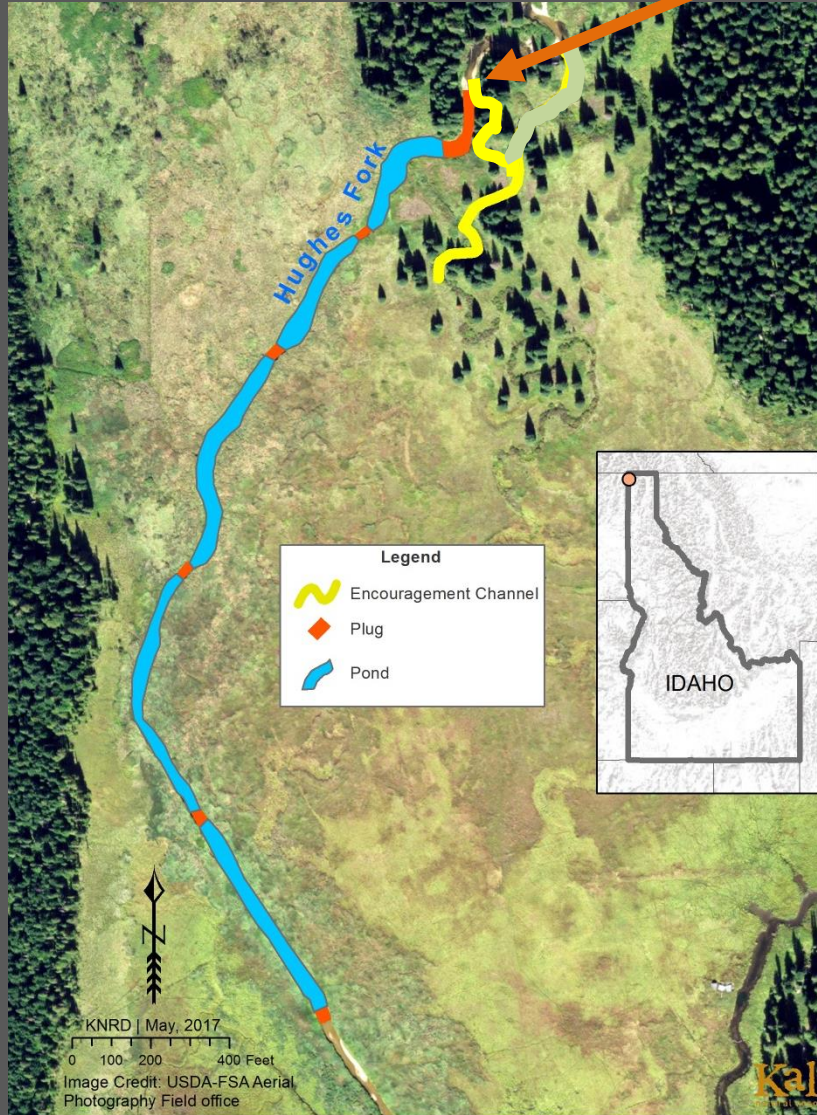






Re-routed  
Hughes Fork





# "Pond & Plug" Design Hughes Meadow

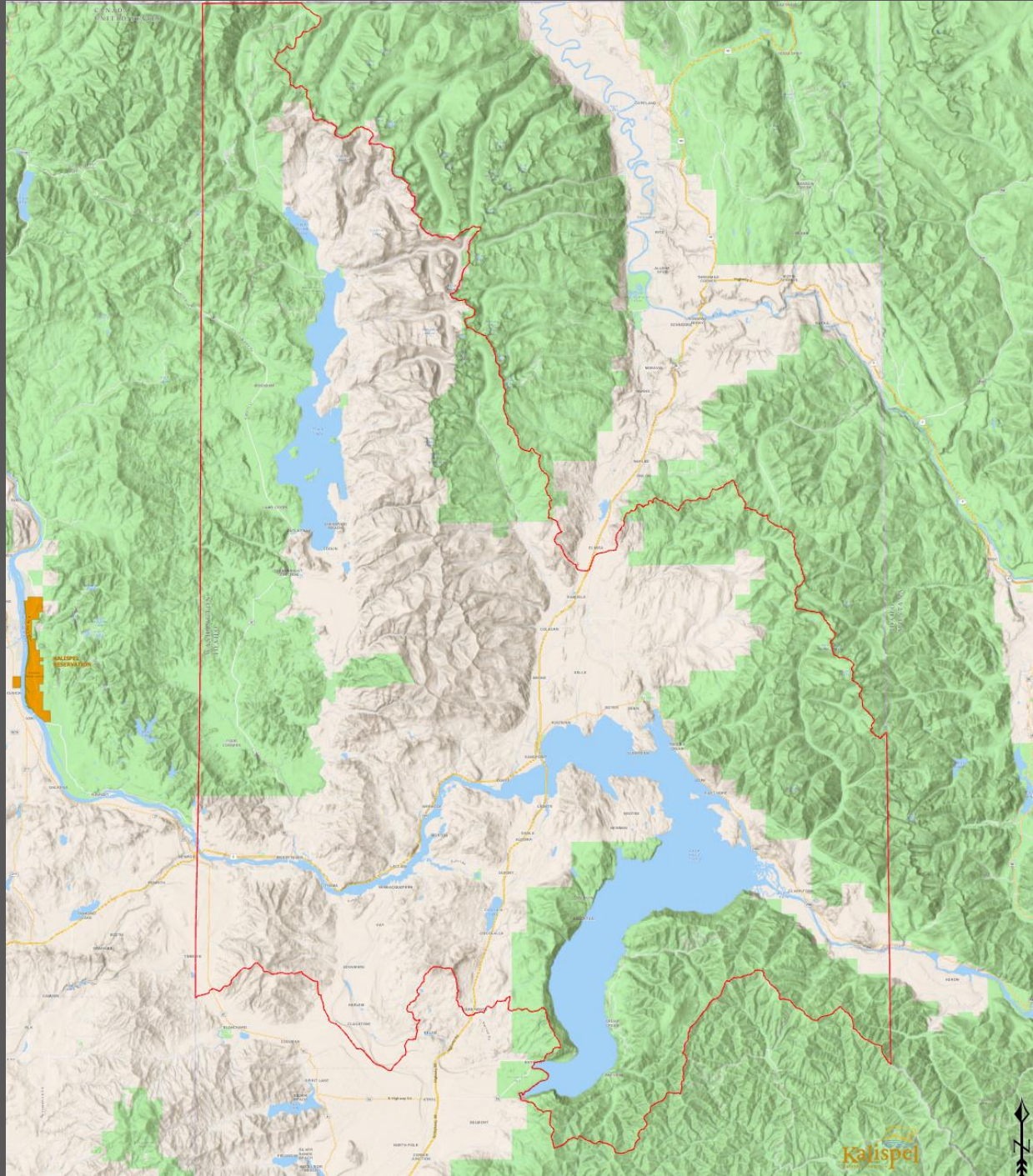




# Water Quality Monitoring



- Monitor Water Quality
  - 42 sites on tributaries to Pend Oreille River , Priest Rivers and Priest Lake
  - pH, temperature, turbidity, Dissolved Oxygen
  - Stream Flows
  - Macro Invertebrates



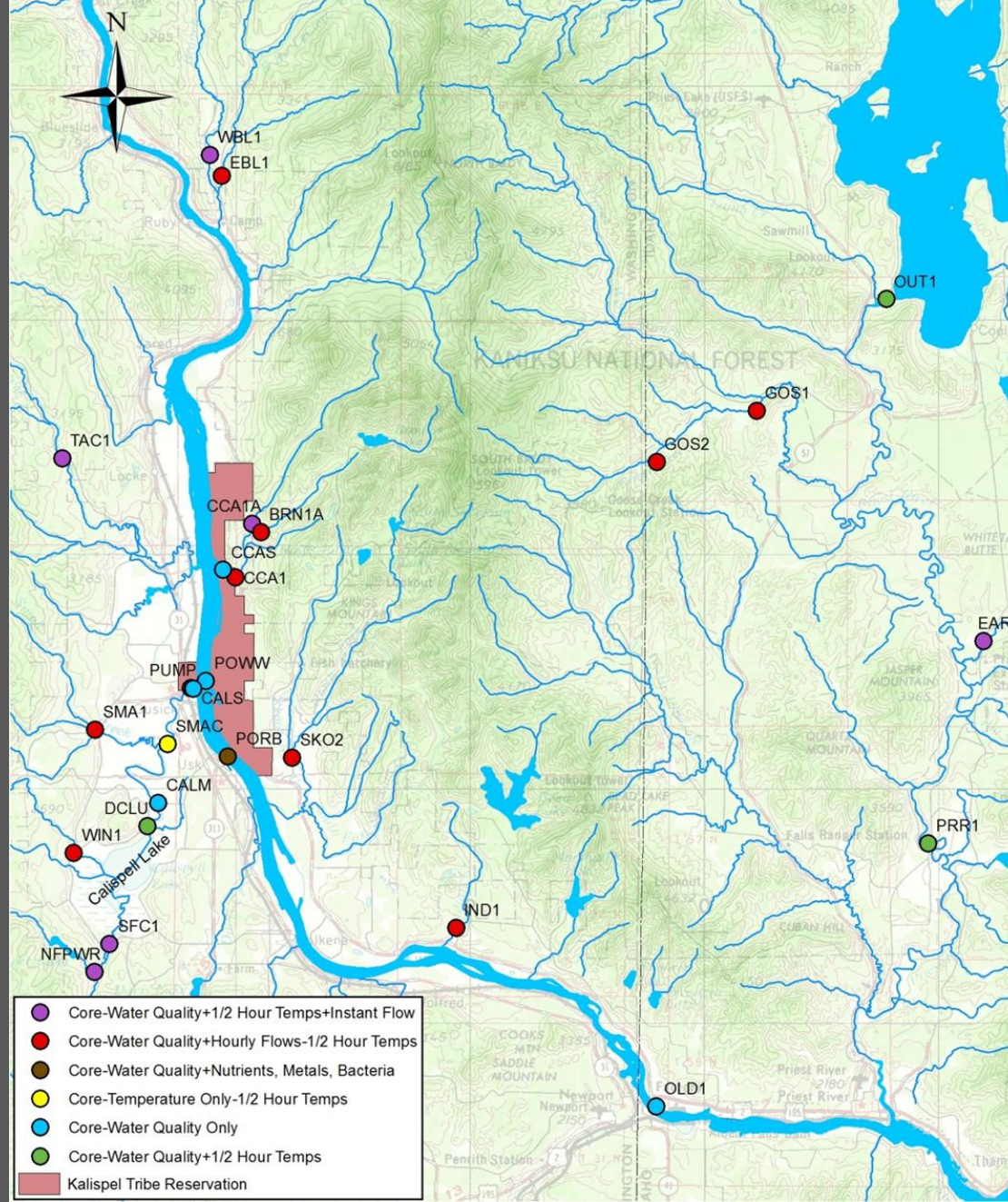
© 2011  
KALISPEL

KALISPEL  
WISCONSIN

Kalispel

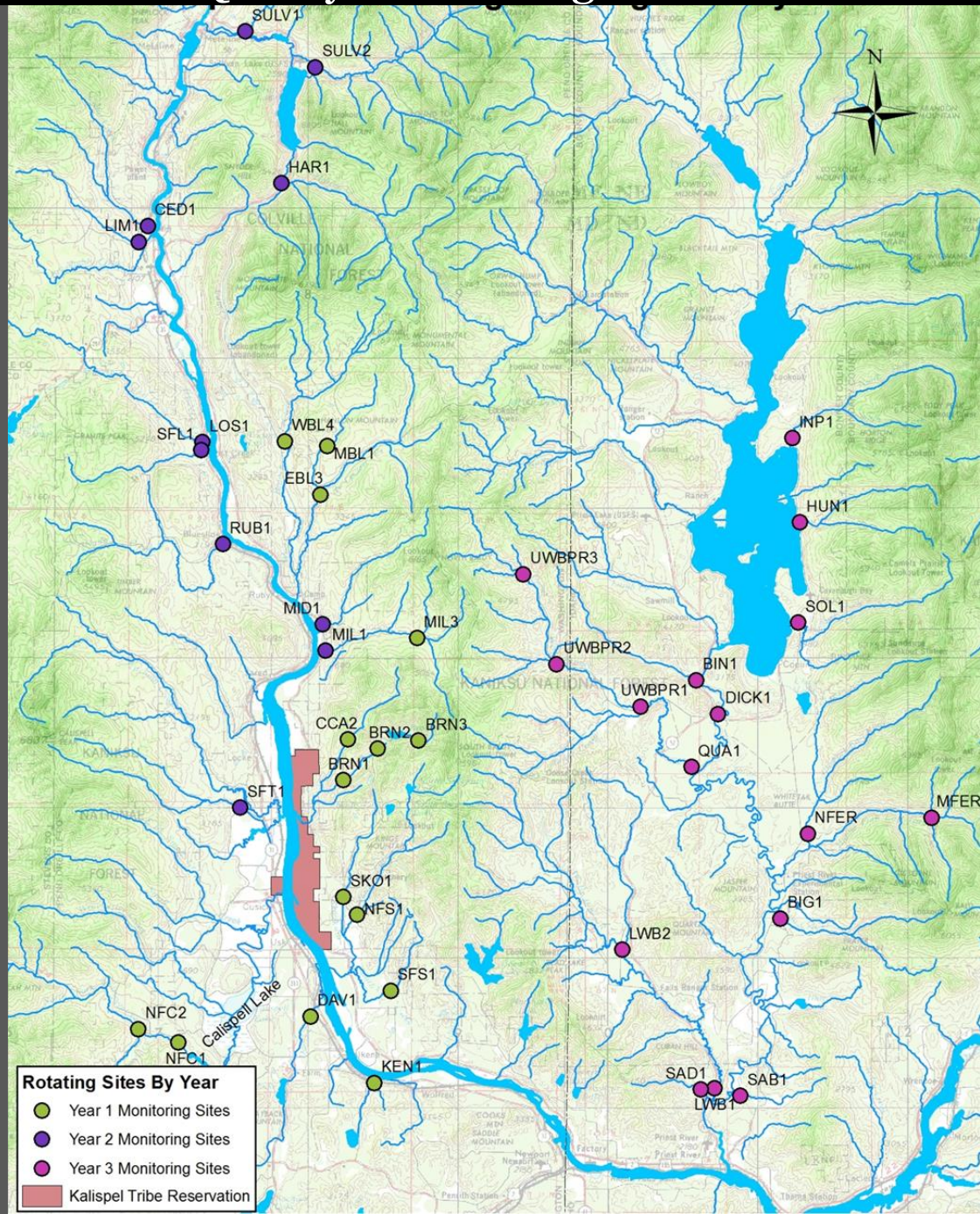


# Kalispel Water Quality Monitoring – Core Sites



- Core-Water Quality+1/2 Hour Temps+Instant Flow
- Core-Water Quality+Hourly Flows-1/2 Hour Temps
- Core-Water Quality+Nutrients, Metals, Bacteria
- Core-Temperature Only-1/2 Hour Temps
- Core-Water Quality Only
- Core-Water Quality+1/2 Hour Temps
- Kalispel Tribe Reservation

# Kalispel Water Quality Monitoring – Rotational Sites by Year



# Water Quality Standards

The Tribe has been authorized by EPA since 2002 to implement Sections 303(c) and 401 of the Clean Water Act in the same manner as a State.

Kalispel water quality standards have been approved by EPA and implemented by the Tribe beginning in 2004.

In March 2023, EPA issued final agency approval of the entirety of the Kalispel Tribe's new and revised Water Quality Standards.

**PUBLIC NOTICE**



**PUBLIC REVIEW AND COMMENT**

**KALISPEL WATER QUALITY STANDARDS**  
The Kalispel Tribe invites public review and comment on draft revisions to the Kalispel Water Quality Standards. The Tribe's existing standards were approved by the US Environmental Protection Agency in 2004 and are being updated as required by the Federal Clean Water Act. The draft revisions and a summary of basis for the revisions are available on the web at:  
<http://kalispeltribe.com/kalispel-natural-resources-department/fisheries-and-water-resources-division/water-resources>

Hard copies of the documents are also available for review at the Kalispel Tribal Headquarters and the Newport Public Library. Written comments must be submitted by March 14, 2016 and may be sent by email to: [WQstandards@kalispeltribe.com](mailto:WQstandards@kalispeltribe.com) or mailed to: Kalispel Tribe of Indians, Attn: Ken Merrill, PO Box 39, Usk, WA 99180-0039

A public hearing will also be held to provide an opportunity to give verbal testimony on March 14th at 5:30 PM at the Kalispel Tribe of Indians' Camas Center for Community Wellness, 1821 LeClerc Rd N, Cusick, WA. An open house will be held one hour prior to the Public Hearing to allow an opportunity for questions about the draft revisions to the Kalispel Water Quality Standards.

**KALISPELTRIBE.COM**



# Wildlife Management



63°F 08/09/2017 07:17PM KT18







MCULTRE 37°F 02/03



MCULTRE 37°F 02/03/12 04:54PM MYCAMERA





MICROTRAP



43°F



04/03/2017

04:29PM

KTI

11



MCULTURE 18°F 02/26



# Forestry and Fire Management





# Cultural Resources Management



# Thank You! Questions?

## Contact Information:

Mike Lithgow

Kalispel Natural Resource Department

Director of Policy and Outreach

[mlithgow@kalispeltribe.com](mailto:mlithgow@kalispeltribe.com)

(509) 370-8794

