

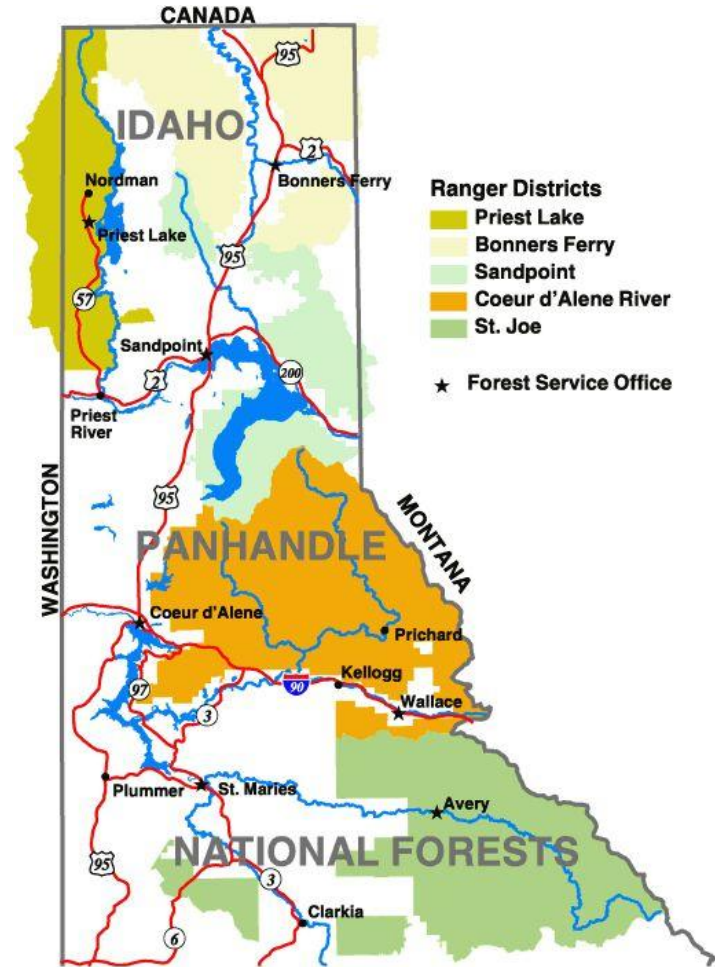


Idaho Panhandle Public Lands Initiative (IPPLI)

Overview of the 2015 IPNF Land Management Plan

The Idaho Panhandle National Forests (IPNF)

- A consolidation of the Kaniksu, Coeur d'Alene and St. Joe National Forests that occurred in the 1970s
- Encompasses approximately 2.3 million acres
- The Kaniksu portion or "North Zone" includes the Bonners Ferry, Sandpoint and Priest Lake Ranger Districts (about 1 million acres).





The 2015 IPNF Land Management Plan

- The forest is divided into **Geographic Areas (GAs)** and **Management Areas (MAs)**
- Contains **direction for land management activities** such as recreation, access, timber harvest, mining, and grazing at the Forestwide, GA and MA scales.
- MA direction is where the rubber meets the road.
- Does NOT authorize specific activities.
- Does NOT control or regulate hunting, fishing, trapping or fish and wildlife populations.



Management Areas (MAs) on the North Zone

- 1a: Designated wilderness
- **1b: Recommended wilderness**
- **1e: Primitive Lands**
- **2b: Eligible wild and scenic rivers**
- 3: Botanical, geological, recreational, or scenic area
- 4a: Research natural area
- 4b: Experimental forest
- **5: Backcountry**
- **6: General forest**
- 7: Primary recreation area



MA 1b: Recommended Wilderness

This MA includes areas recommended for wilderness designation by the Forest Service. It is managed to preserve natural ecological processes, opportunities for primitive types of recreation, and geological, scientific, educational, scenic, and historic features, pending congressional action.

- **Location:** This MA includes portions of the Salmo-Priest (18,600 acres), Selkirk (36,700 acres) and Scotchman Peaks (14,000 acres in Idaho) Roadless Areas
- **Size:** 69,300 acres in Bonner and Boundary Counties
- **Activities allowed:** hiking, stock use, mining of locatable minerals
- **Activities prohibited:** off-highway vehicles, over-snow vehicles, mountain bikes, road construction and reconstruction, timber harvest, mining of saleable and leasable minerals, grazing



MA 1e: Primitive Lands

This MA encompasses lands with wilderness characteristics but differs from recommended wilderness areas. Unlike recommended wilderness, over-snow vehicle use and mountain biking are permitted here, and the area is not being proposed for official wilderness designation.

- **Location:** This MA includes lands in the upper Pack River and Selkirk Crest.
- **Size:** 19,730 acres
- **Activities allowed:** hiking, stock use, mountain bikes, over-snow vehicles, mining of locatable minerals
- **Activities prohibited:** off-highway vehicles, road construction and reconstruction, timber harvest, mining of saleable and leasable minerals, grazing



MA 2b: Eligible Wild and Scenic Rivers

This MA includes stream and river segments eligible for designation as Wild and Scenic Rivers. These segments are managed to maintain their free-flowing conditions and to protect their unique scenic, recreational, geological, fish, wildlife, historical, and cultural values.

- **Management direction varies by classification.**



MA 2b: Eligible Wild and Scenic Rivers: Wild Segments

- **Location:** Wild segments include Upper Priest River (19.8 miles), Hughes Fork (4.8 miles), and Long Canyon Creek (14.1 miles).
- **Size:** 11,146 acres in Bonner and Boundary Counties
- **Activities allowed:** hiking, stock use, mountain bikes, existing motorized access, road reconstruction, mining
- **Activities prohibited:** new motorized access, road construction, timber harvest, grazing



MA 2b: Eligible Wild and Scenic Rivers: Recreational Segments

- **Location:** Recreational segments include Pack River (13.7 miles), Hughes Fork (9.9 miles), and Kootenai River (6.5 miles).
- **Size:** 7,885 acres in Bonner and Boundary Counties
- **Activities allowed:** hiking, stock use, mountain bikes, off-highway vehicles, over-snow vehicles, road construction and reconstruction, timber harvest for restoration purposes, mining, existing grazing
- **Activities prohibited:** commercial timber harvest, new grazing



MA 5: Backcountry

This MA consists almost entirely of roadless areas not classified as recommended wilderness or primitive lands. Although lookouts, cabins, or other structures may exist, and various recreational activities are permitted, this MA remains largely undeveloped.

- **Location:** This MA is primarily concentrated in middle to high elevation areas.
- **Size:** 213,500 acres in Bonner and Boundary Counties
- **Activities allowed:** hiking, stock use, mountain bikes, off-highway vehicles, over-snow vehicles, mining of locatable minerals, grazing



MA 5: Backcountry: Road Construction And Reconstruction

- **In roadless areas:** Road construction and reconstruction in roadless areas is subject to the Idaho Roadless Rule.
- **Outside roadless areas:** Road construction and reconstruction outside of roadless areas is allowed to maintain or restore resources.



MA 5: Backcountry: Timber Harvest

- **In roadless areas:** Timber harvest in roadless areas is subject to the Idaho Roadless Rule.
- **Outside roadless areas:** Timber harvest outside of roadless areas is not allowed.



MA 5: Backcountry: Saleable And Leasable Minerals

- **In roadless areas:** Mineral leasing and sale of common variety minerals in roadless areas is subject to the Idaho Roadless Rule.
- **Outside roadless areas:** Mineral leasing and sale of common variety minerals is not allowed.



MA 6: General Forest

This MA consists of lands with roads, trails, structures and other evidence of development. Commercial timber harvest occurs here, and resources objectives are achieved primarily through active management tools.

- **Location:** This MA is primarily concentrated in low to middle elevation areas.
- **Size:** 568,400 acres in Bonner and Boundary Counties
- **Activities allowed:** hiking, stock use, mountain bikes, off-highway vehicles, over-snow vehicles, road construction and reconstruction, timber harvest, mining, grazing
- **Activities prohibited:** None



Kootenai National Forest Land Management Plan

- The Kootenai National Forest manages approximately 50,600 acres in Bonner and Boundary Counties.
- The Kootenai Land Management Plan is very similar. However, MA 5 (Backcountry) is subdivided into non-motorized, winter motorized, and motorized for recreation purposes.
- The breakdown of the Kootenai MAs in Idaho is:
 - MA2b: Eligible Wild and Scenic Rivers (150 acres)
 - MA3: Botanical, geological, recreational, or scenic area (1,200 acres)
 - MA 5: Backcountry (34,900 acres)
 - MA 6: General Forest (14,300 acres)



Available on the IPPLI Website

- Map illustrating Management Areas described in the IPNF Land Management Plan
- Maps illustrating the Kaniksu Winter Travel Management Plan